



**care**<sup>®</sup>

75 YEARS

**CARE USA 2020  
Annual Report**

Today I'll...

# letter from the president and CEO

ZAMBIA

**In this  
unprecedented  
year, CARE  
launched  
our largest  
humanitarian  
response  
since WWII.**



With your continued, steadfast support, along with the incredible efforts of CARE's staff around the world, we launched our largest humanitarian response since our founding, delivering lifesaving assistance to over **92 million individuals across more than 100 countries.**



This has been a year full of uncertainty, requiring flexibility, creativity, innovation, and above all, resilience—the resilience of CARE staff, our partners, and the people we serve. When we began fiscal year 2020, we were reflecting on our 75th anniversary and the audacity that so well characterized the small group of Americans who came together in 1945 to launch a simple but powerful idea: the CARE Package. In the face of enormous challenges, thanks to the courage and entrepreneurial spirit of a few, CARE delivered more than 100 million CARE Packages to World War II survivors and families around the world.

While our work this past year was transformed by a global pandemic, I feel incredibly grateful and proud that with your support, the CARE team continued to demonstrate the same audacious spirit and agility that our founders did 75 years ago. From the onset of the pandemic, our teams quickly mobilized to reach over 10 million people in 59 countries by the end of June. **We provided more than 300,000 households with cash and over 2 million with clean water and hygiene kits to help combat the virus.**

**For the first time in our history, we launched the CARE Package as part of our programming in the U.S. This direct response to the COVID-19 pandemic saw more than 450,000 CARE Packages delivered across five states in just a few months.**

**Within the context of the pandemic, we are continuing to lead groundbreaking efforts to uplift women and girls as key agents of change within their**

**communities**, recognizing that their voices are critical to combating the pandemic and ensuring lasting change in the fight against poverty. We have also continued to strengthen community resilience and response to disasters, protracted conflicts, and climate crises that are devastating vulnerable populations. In Yemen and Syria, for example, our work has remained strong and critical.

As we work toward more hopeful days ahead, CARE is committed to ensuring fast and fair distribution of the COVID vaccine as part of our long-term focus on defeating poverty and achieving social justice with the world's most vulnerable and hardest to reach. Through the strength of our public and private partnerships, as well as our expertise, we are committed to being part of the solution that ensures we are all safe from this virus.

CARE is crafting a 2030 Vision that will lay the groundwork for us to work in a world that is increasingly complex yet increasingly connected. While the journey ahead will present great challenges, particularly in light of the havoc wrought by the global pandemic, we continue to be inspired by our founders, our supporters, and advocates who share our dream to build a more equitable future for all.

Thank you for your trust in and commitment to CARE.



*Michelle Nunn*

**Michelle Nunn**  
President and CEO

2020 CARE  
by the  
numbers

1,349

PROJECTS

10



Equipped **33.8 million** people with information and access to sexual, reproductive, and maternal health resources.



Served **28.8 million** people through humanitarian response.

**44%** of projects engaged in advocacy.



Economically empowered **2.6 million** women by expanding access to financial services, employment, and equitable wages.

# 04

COUNTRIES

# 92M

PEOPLE SERVED



Supported **22.6 million** people as they increased their food security and resilience to climate change.



**39%** of all projects tested new ways to fight poverty.



Helped **2.4 million** people live a life free from violence.





A woman with dark hair, wearing a pink top with white lace trim, is sitting at a desk. Behind her is a large pink data chart with handwritten numbers and text. The chart includes categories like 'SURVIVING INFANT', 'NEW PREGNANT', 'W/LBA', 'ADOLESCENT GIRL', and 'M.R'. The numbers are arranged in columns. The text 'ALL VACCIN' and 'SAFE' is visible on a banner behind her.

## stories of impact



## Healthy Mothers and Children

### Keeping Communities Healthy in Sierra Leone

Rosaline, 29, is a nurse. CARE is a partner of the Kakoya health facility in Koinadugu district, where she works.

Rosaline was a frontline worker during the Ebola outbreak in 2014 and 2015. Today, she is playing a pivotal role in her community's response to the coronavirus pandemic.

**“Infection prevention and control is our first area of work,” says Rosaline. “We do community engagement meetings; we do our outreach.”**

Rosaline takes her motorcycle and goes out to nearby communities. She sits with people to explain COVID-19 and how they can protect themselves. “They trust me because I’ve come from them, I was born in this area and they know me. So, they know to trust me when I tell them that this is important.”

**“I became a health worker because my father died from sickness,” Rosaline says. “I wanted to save people’s lives in my community.”**



## Education and Work for Women and Girls

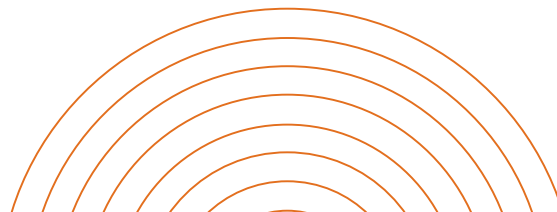
### Niger: From Frocks to Masks

**When Aïchatou Cheitou's village savings group members lost their jobs due to COVID-19, and sales dried up at her husband's small store, Aïchatou's worries spurred her to action.**

Before COVID-19, Aïchatou, 33, made her livelihood by sewing, using a machine provided to her group by CARE and the local organization Leadership Challenge. Aïchatou and other sewers from the savings co-op quickly switched to producing masks in response to the pandemic. They've made more than 10,000, creating a new stream of income in the process and keeping their business—and their families—alive.

**“We also produced soap and ointment and distributed it among all members,” Aïchatou says. “And we agreed to buy food in bulk, and redistribute it among the members.”**

The group members pooled their funds to buy enough rice, maize, and millet and share it so that families could have three meals a day.





## Food and Nutrition

### Bringing Back an Icon

In the shadow of WWII, a small group of Americans came together to help millions of Europeans with a simple but powerful plan: the CARE Package®.

This innovative idea sparked an American movement that would deliver more than 100 million CARE Packages containing food and medicine to people in need worldwide, along with the tools and supplies needed to rebuild their lives.

Today, COVID-19 is pushing families to the brink, depleting resources, livelihoods, and communities' ability to cope. In response, CARE has revived the CARE Package, providing vital hygiene supplies, meals, and gestures of thanks to those on the front lines of this crisis—and, for the first time in our history, to families in the U.S.

Learn how to be a part of the CARE Crisis Response Campaign or send a CARE Package at [carepackage.org](https://carepackage.org).



## Featured Program: HATUTAN

Begun in Timor-Leste in 2018, HATUTAN is a \$26 million, five-year program to improve literacy, health, and nutrition outcomes in preschools and primary schools. In partnership with the Government of Timor-Leste and development stakeholders, HATUTAN aims to strengthen literacy; education; nutrition; health; water, sanitation, and hygiene; and gender equality in four municipalities.

When schools were closed and communities locked down to stop the spread of COVID-19, HATUTAN distributed food supplies and reading materials to thousands of households whose children would usually attend pre-primary and primary schools. The food distribution ensured that children had continued access to nutritious food at home, and the educational books encouraged home-based learning and reduced learning losses in an uncertain time.





## Disaster Response

### Working for Justice: Three Years of Displacement

In 2017, hundreds of thousands of Rohingyas fled violence in Myanmar. Today, nearly 1 million have settled in Cox's Bazar, the world's most overcrowded refugee camp, amid a challenging humanitarian situation.

Now the COVID-19 pandemic has added another challenge of complexity to their lives. CARE has responded to this crisis from the start, coordinating and providing essential services and infrastructure in three camps, including health and hygiene supplies, handwashing stations, and health centers.

Amid the difficulties of daily life, there is optimism: children at play, friendly soccer matches, and the deep hope in mothers' eyes as they care for their infants, that there will be a better and more beautiful world for them in the future.



Schools reopened in July 2020, and the project resumed planned activities with an increased focus on hygiene, handwashing, and engaging communities in health awareness messages. Through collaboration with municipal-level COVID-19 task forces, household hygiene packages were delivered door-to-door to members of Village Savings and Loan groups in the four municipalities targeted by HATUTAN. Each package included two bars of soap, instructions for building handwashing stations, a physical distancing poster, a sticker expressing the benefits of soap, and a COVID prevention poster.

As a result of the combined efforts to support Timor-Leste's COVID-19 response plan, the proportion of schools with handwashing stations increased from 10% to 72%, helping to mitigate disease transmission risks for students and teachers.

# 2020 Global Reach

## CARE International Country Presence for FY20:

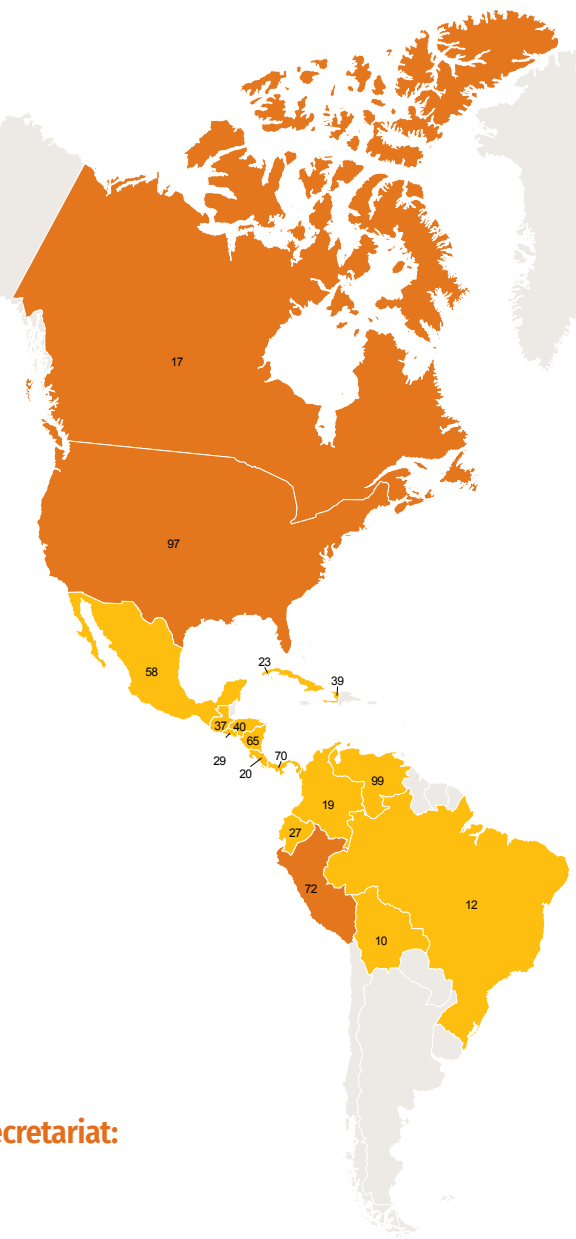
- |   |                                      |   |
|---|--------------------------------------|---|
| 1. Afghanistan                          | 38. Guinea                           | 77. Senegal <sup>✓</sup>                          |
| 2. Albania <sup>✓</sup>                 | 39. Haiti                            | 78. Serbia  |
| 3. Armenia <sup>✓</sup>                 | 40. Honduras                         | 79. Sierra Leone                                  |
| 4. <b>Australia</b> <sup>**</sup>       | 41. <b>India</b> <sup>**</sup>       | 80. Solomon Islands <sup>✓</sup>                  |
| 5. <b>Austria</b> <sup>**</sup>         | 42. Indonesia <sup>**</sup>          | 81. Somalia                                       |
| 6. Azerbaijan <sup>✓</sup>              | 43. Iraq                             | 82. South Africa <sup>✓</sup>                     |
| 7. Bangladesh                           | 44. Italy <sup>✓</sup>               | 83. South Sudan                                   |
| 8. Belgium                              | 45. Japan <sup>**</sup>              | 84. <b>Sri Lanka</b> <sup>**</sup>                |
| 9. Benin                                | 46. Jordan                           | 85. Sudan   |
| 10. Bolivia <sup>✓</sup>                | 47. Kenya                            | 86. Switzerland                                   |
| 11. Bosnia and Herzegovina              | 48. Kiribati <sup>✓</sup>            | 87. Syria <sup>✓</sup>                            |
| 12. Brazil <sup>✓</sup>                 | 49. Kosovo                           | 88. Tanzania                                      |
| 13. Burkina Faso                        | 50. Laos                             | 89. <b>Thailand</b> <sup>**</sup>                 |
| 14. Burundi                             | 51. Lebanon                          | 90. Timor-Leste                                   |
| 15. Cambodia                            | 52. Liberia                          | 91. Togo  |
| 16. Cameroon                            | 53. <b>Luxembourg</b> <sup>**</sup>  | 92. Tonga <sup>✓</sup>                            |
| 17. <b>Canada</b> <sup>**</sup>         | 54. Macedonia <sup>✓</sup>           | 93. Turkey  |
| 18. Chad                                | 55. Madagascar                       | 94. Tuvalu <sup>✓</sup>                           |
| 19. Colombia                            | 56. Malawi                           | 95. Uganda  |
| 20. Costa Rica <sup>✓</sup>             | 57. Mali                             | 96. <b>United Kingdom</b> <sup>**</sup>           |
| 21. Côte d'Ivoire                       | 58. Mexico <sup>✓</sup>              | 97. <b>United States of America</b> <sup>**</sup> |
| 22. Croatia <sup>✓</sup>                | 59. Montenegro <sup>✓</sup>          | 98. Vanuatu                                       |
| 23. Cuba                                | 60. <b>Morocco</b> <sup>**</sup>     | 99. Venezuela <sup>✓</sup>                        |
| 24. <b>Czech Republic</b> <sup>**</sup> | 61. Mozambique                       | 100. Vietnam                                      |
| 25. Democratic Republic of the Congo    | 62. Myanmar                          | 101. West Bank & Gaza                             |
| 26. Denmark <sup>**</sup>               | 63. Nepal                            | 102. Yemen  |
| 27. Ecuador                             | 64. <b>Netherlands</b> <sup>**</sup> | 103. Zambia                                       |
| 28. Egypt <sup>**</sup>                 | 65. Nicaragua <sup>✓</sup>           | 104. Zimbabwe                                     |
| 29. El Salvador <sup>✓</sup>            | 66. Niger                            |   |
| 30. Ethiopia                            | 67. Nigeria                          |   |
| 31. Fiji <sup>✓</sup>                   | 68. <b>Norway</b> <sup>**</sup>      |   |
| 32. <b>France</b> <sup>**</sup>         | 69. Pakistan                         |   |
| 33. <b>Georgia</b> <sup>**</sup>        | 70. Panama <sup>✓</sup>              |   |
| 34. <b>Germany</b> <sup>**</sup>        | 71. Papua New Guinea                 |   |
| 35. Ghana                               | 72. <b>Peru</b> <sup>**</sup>        |   |
| 36. Greece <sup>✓</sup>                 | 73. Philippines                      |   |
| 37. Guatemala                           | 74. Romania <sup>✓</sup>             |   |
|   | 75. Rwanda                           |   |
|   | 76. Samoa <sup>✓</sup>               |   |

## CARE International Secretariat:

- Geneva, Switzerland<sup>^</sup>
- Brussels, Belgium<sup>^</sup>
- London, UK<sup>^</sup>
- New York, United States<sup>^</sup>

## Other CARE Entities

- Belgium<sup>o</sup> (Fundraising office of CARE France)



- CARE International Country Presence
- CARE International Members and Affiliates, CARE International Secretariat, and Sub-offices

# REACH BY REGION

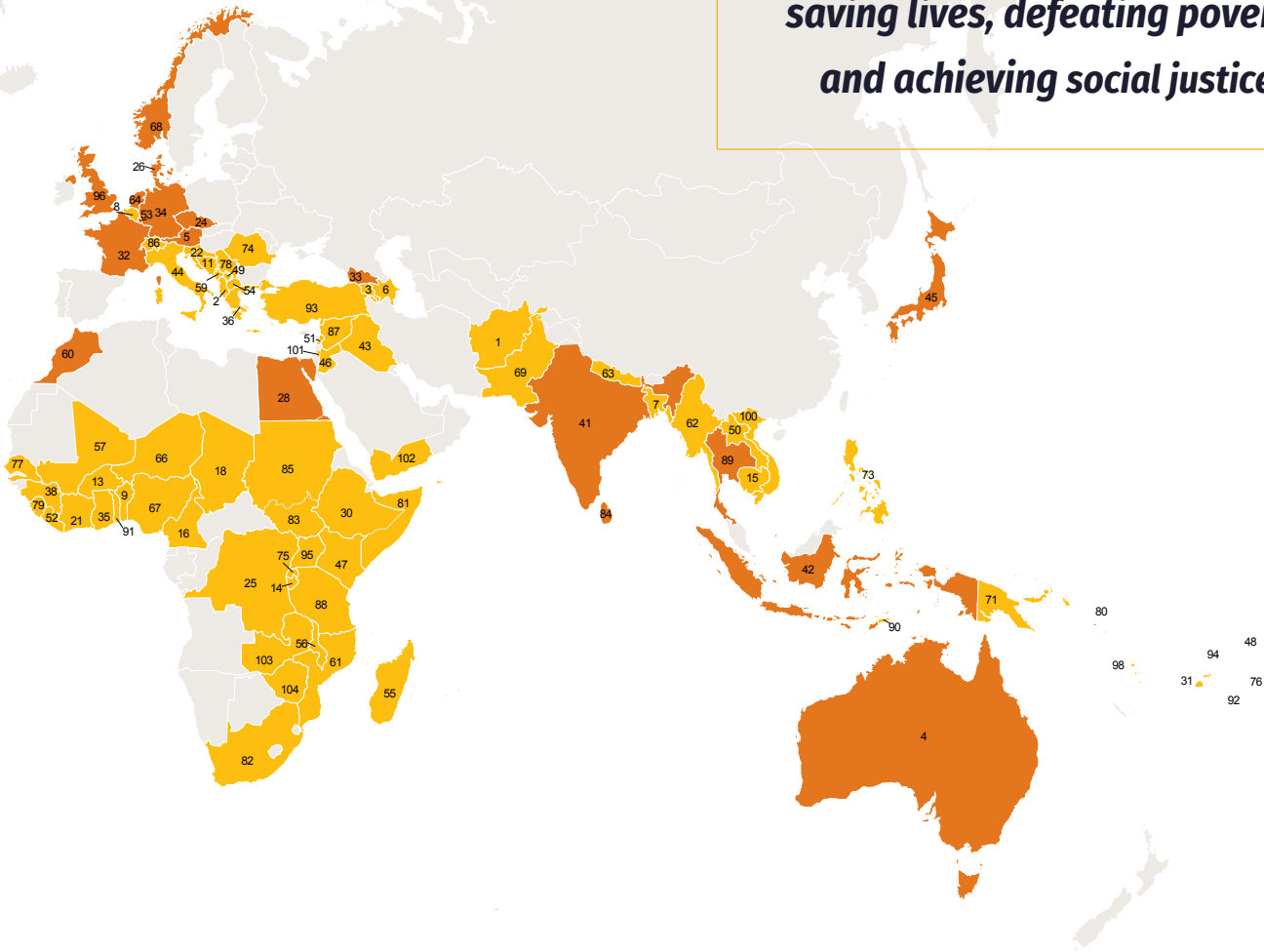
## Latin America and Caribbean

- 1.1 million people
- 132 projects
- 11 countries

## West Africa

- 5.3 million people
- 179 projects
- 12 countries

In fiscal year 2020, CARE worked in **104 countries** around the world, *saving lives, defeating poverty, and achieving social justice.*



- \*\* CARE International Members, Affiliates and Candidates<sup>1</sup>.
- ¥ Limited CARE presence, mostly working through strategic partnerships.
- ^ CI Secretariat offices in Switzerland, Belgium, and the United States are part of CARE's international advocacy and humanitarian work.
- ∅ Other CARE entities and/or sub-offices with a strong focus on fundraising.

<sup>1</sup> CARE International Members, Candidates, and Affiliates may implement projects and initiatives in their own countries.

CARE International acknowledges the existence of divergent views to certain territories. CARE International aligns with United Nations-sourced maps for consistency purposes; this use does not imply a political statement on any given country or territory.

### East, Central, and Southern Africa

- 15.1 million people
- 356 projects
- 15 countries

### Middle East, North Africa, and Europe

- 6.1 million people
- 247 projects
- 28 countries

### Asia and the Pacific

- 64.8 million people
- 413 projects
- 23 countries



75 YEARS OF  care®

**Not since CARE's founding 75 years ago have we faced a truly global challenge like the COVID-19 pandemic.**

**CARE was built**

**for this moment.**



GERMANY 1948



care package<sup>®</sup>

We know that investing in women and girls is the key to global recovery, but we can't do that without every partner, every supporter, every gift. CARE has relaunched the iconic CARE Package, bringing relief to our communities around the world and, for the first time in our history, to the United States. And CARE has launched our largest fundraising campaign in decades, raising **\$100 million to reach 100 million people in 100 countries** and to help our communities build back stronger. Learn more at [care.org](https://www.care.org).

USA







# featured foundations

**The Bill & Melinda Gates Foundation** has been a core CARE partner since 2001, contributing vital resources to women's empowerment, advocacy, food security, health, family planning, water and sanitation, emergency response, and livelihood programming. This year, the Gates Foundation continued to support CARE's Advocacy and Learning Tours program, fueling CARE's efforts to raise awareness about the positive reach and scope of U.S. development assistance. Building on a shared commitment to gender equality, the foundation provided additional resources to CARE's financial inclusion work in Uganda, which is generating evidence around women's empowerment as part of savings programming. New investments bolstered CARE's monitoring, evaluation, and learning capacity; fueled policy analysis efforts in Ethiopia; and highlighted key learnings from CARE's work with health systems in fragile settings like South Sudan. Efforts expanded to reduce maternal and neonatal mortality in the Indian state of Bihar as part of the foundation's ongoing support to strengthen the government health system in partnership with CARE. An integrated data system to monitor and validate the program also was introduced, as well as resources for nutrition technical leadership and ongoing support for the elimination of *visceral leishmaniasis* in Bihar and Jharkhand.

**The Rockefeller Foundation** pledged its support to the CARE Package Relief program, providing lifesaving food and services to the most vulnerable people in Louisville, Kentucky, and Houston, Texas, while also putting people back to work. The effort builds partnerships with gig economy platforms to provide service organizations with the surge workforce needed to reach radically more people in need and resource their ability to book this work as paid, on-demand jobs. The program will deliver 175,000 meals and support fair wages for gig workers while serving their neighbors.

**Bloomberg Philanthropies** continued to support an exciting and innovative new approach to CARE's Village Savings and Loan Association (VSLA) model in Tanzania. Through the partnership, CARE facilitates group-driven investments in a range of economic activities, with the ultimate goal of leveraging the VSLA platform into vehicles for collective, enterprise-level investments to accelerate progress toward women's access to markets, engagement in value chains, increased and recognized income contributions, and decision-making authority through economic autonomy. Additionally, CARE partnered with Bloomberg Philanthropies to expand the global COVID-19 response by testing and scaling key community and frontline health innovations in Tanzania to adapt to other CARE health programs around the world. This work enables CARE to align closely with critical partners at the regional level and ultimately feeds learnings into Tanzania's national-level infectious disease control strategy, including for COVID-19 response.





**Eleanor Crook Foundation** partnered with CARE on two important efforts to increase support for nutrition advocacy, including a research project on USAID's Feed the Future initiative and adapting CARE's advocacy work to the pandemic. This included support for the virtual CARE National Conference, which reached 400,000 viewers in at least 75 countries to build crucial support for the foundation's and CARE's advocacy priorities.

**The David and Lucile Packard Foundation** supported CARE to provide COVID-19 relief around the world, with a particular focus on women and girls. As an early partner in the pandemic, Packard provided essential capacity to equip CARE to quickly expand response efforts to 59 countries by June and reach over 10 million people with speed and flexibility.



featured  
partners

**Together, we have  
made a difference.**

**Companies coming together  
to support CARE's Crisis  
Response Campaign**

Many of CARE's longstanding partners, including Cargill, The Coca-Cola Company, The PepsiCo Foundation, and UPS, made immediate and significant investments in CARE's COVID-19 response, helping us provide more than 10 million people worldwide with clean water; hygiene kits; access to food, shelter, and cash; and protection from gender-based violence within the first few months of the pandemic. Abbott has helped us train community health workers and provide wages for women. With funding from Mars, we were able to ensure that more than 1 million women found innovative ways of earning income, boosting gender equality and business opportunities. Our partnerships with Gap Foundation, Mastercard, and P&G's Olay brand enabled us to launch a new CARE Package® to send funds, food, and relief to thousands of people in the U.S.

Thank you to all of our FY20 Corporate Crisis Response Campaign Partners (\$100K+): Abbott, Bank of America, Cargill Inc., The Coca-Cola Company, Colgate-Palmolive, Gap Foundation, IMVU, Mars Inc., Mary Kay, Mastercard, Mondelēz International Foundation, Morgan Stanley, P&G's Olay brand, The PepsiCo Foundation, The Pfizer Foundation, and The UPS Foundation.





BURUNDI

## MARS

### Mars Inc.

CARE and Mars Wrigley have been partners since 2015 and are building on the success and learnings of their Village Savings and Loan Association (VSLA) initiative, aimed at women's social and economic empowerment in cocoa-growing communities in Côte d'Ivoire and Ghana. With an additional \$10 million investment from Mars, CARE will expand the VSLA program to reach another 50,000 people by 2025.

Through the CARE partnership, DOVE® Chocolate—a Mars Wrigley Confectionery brand—builds financial skills, offers guidance, and promotes resources, including VSLAs, to empower female farmers and increase their voice in financial decisions. Mars also engages consumers to join its mission to empower female cocoa farmers by donating to CARE through the sales of specially marked products from its DOVE® Chocolate.



### Mastercard

CARE and the Mastercard Center for Inclusive Growth have partnered to broadly reach 3.9 million entrepreneurs in Peru, Pakistan, and Vietnam. Together we will empower entrepreneurs with tailored business tools and financial resources to achieve their goals while lifting up their employees, families, and communities. At least 50% of the businesses reached will be women-owned or -operated. The Ignite program takes a market-based approach to support the growth of women entrepreneurs that is sustainable and scalable. Locally, CARE will partner with financial service providers, helping them to adapt existing products and services supporting micro and small businesses. Methods will include joint marketing and outreach campaigns focused on entrepreneurship and direct services like loans, business networking, mobile business tools, and business loans. This growing partnership, funded with a grant of \$5.26 million from the Mastercard Impact Fund, reaffirms Mastercard and CARE's commitment to women's economic empowerment.



# donors and partners

## Global Leadership Society

**Cumulative Lifetime Giving:**  
*\$1,000,000+*

Abbott

David T. and Jean K. Akers

Alliance for a Green Revolution in Africa

Armacost Charitable Remainder Unitrust

Amway

Nancy K. Anderson

The Annenberg Foundation

Anonymous (36)

The David R. & Patricia D. Atkinson Foundation

The Atlantic Philanthropies

Estate of Barbara L. Bacich

James and Marietta Bala

Mr. E. T. Baldrige

Margaret D. and Matthew T. Balitsaris

Paul and Mary Jan Bancroft

Baxter International Foundation

Benevity

Ken Birman and Anne Neiryneck

The Arthur M. Blank Family Foundation

Bloomberg Philanthropies

Estate of William E. Boeing III

The Dietrich W. Botstiber Foundation

Estate of Daniel L. Brenner

Finn Brooks Family Foundation

The Howard G. Buffett Foundation

Helen and Harold Buirkle

Priscilla Bullitt Charitable Trust

C.E. and S. Foundation Inc.

Cargill Inc.

Margaret A. Cargill Philanthropies

Eduardo Castro-Wright and Fabiola De Castro

Catholic Relief Services

The Coca-Cola Company

Estate of Priscilla B. Collins

The Community Foundation for Greater Atlanta

Community Foundation of Greater Memphis

H. Conrad III and Sarah S. Meyer

Covance Inc.

Credit Suisse

Credit Suisse Americas Foundation

Susan M. Crown

Estate of J.W. Culler

Rosalie A. Danbury

Michael and Susan Dell Foundation

Delphi Asset Management

Delta Air Lines

James Dimon

Estate of Elaine Dooman

Dubai Cares

Educate a Child

Estate of Mark Eisner Jr.

The LeBrun Foundation

Joseph H. and Barbara I. Ellis

ELMA Philanthropies

Everett/O'Connor Charitable Trust

Estate of Lucia P. Ewing

Estate of Saralee Fine

Estate of Janet A. Fisher

The Flatley Foundation

The Ford Foundation

The Frees Foundation

Estate of Esther Freier

Lloyd A. Fry Foundation

Gap Foundation

Gap Inc.

Bill & Melinda Gates Foundation



CAMBODIA

GE Foundation  
 General Mills Foundation  
 Global Environment Technology Foundation  
 Global Impact  
 Goldman Sachs  
 Wayne R. and Camellia A. Helsel  
 The William and Flora Hewlett Foundation  
 Conrad N. Hilton Foundation  
 Justin S. and Hilarie V. Huscher  
 Glenn H. and Deborah Dow Hutchins  
 Jahn's Private Charitable Foundation  
 Johnson & Johnson  
 Sheila C. Johnson  
 The Jordan Family  
 JPMorgan Chase Foundation  
 Michael G. and Nancy O. Kaehr  
 The Nancy Olmsted Kaehr & Michael G. Kaehr Endowment  
 Peter H. and Joan M. Kaskell  
 Dean C. and Elizabeth H. Kehler  
 Rosalind and Michael Keiser  
 W.K. Kellogg Foundation  
 The Kendeda Fund  
 Estate of Mary B. Ketcham  
 The Kresge Foundation  
 Latter-day Saint Charities  
 Levi Strauss Foundation  
 Elizabeth M. Lutas  
 The John D. and Catherine T. MacArthur Foundation  
 Mars Inc.  
 John Martello  
 Mastercard Impact Fund  
 The MathWorks Inc.  
 The Anita M. McCullough Living Trust  
 The Andrew W. Mellon Foundation  
 Merck & Co. Inc.  
 Microsoft Corporation  
 Millennium Water Alliance  
 Gordon and Betty Moore Foundation  
 William S. and Jane R. Mosakowski  
 Charles Stewart Mott Foundation  
 Multiple District 19 Lions  
 Estate of Mary E. Murdock  
 The New York Community Trust  
 NIKE Foundation  
 Oak Foundation

Daniel Oliver Revocable Trust  
 Open Society Foundations  
 Oracle  
 Orange County Community Foundation  
 The Osprey Foundation  
 The David and Lucile Packard Foundation  
 The Panaphil Foundation  
 The Peierls Foundation  
 Jim Pentecost  
 The PepsiCo Foundation  
 Pew Charitable Trusts  
 Pfizer Inc.  
 The Pfizer Foundation  
 The Picower Foundation  
 Power and Telephone Supply Company  
 Procter & Gamble Company  
 Genie and Scott Randell  
 The Rockefeller Foundation  
 Estate of Hazel Gibbons Ross  
 Reach Out to Asia  
 Adelia Russell Charitable Foundation  
 Ben and Luanne Russell  
 John and Virginia Sall  
 Sall Family Foundation  
 The San Francisco Foundation  
 Sheryl Sandberg and Tom Bernthal  
 Saperlipopette  
 Estate of Kendrick Schlatter  
 Estate of Ronald and Elisabeth Schodt  
 Schultz Family Foundation  
 The Charles Schwab Corporate Foundation  
 Silicon Valley Community Foundation  
 Harold Simmons Foundation  
 Brian J. Smith and Laurel Spellman  
 David A. Smith and Nancy H. Smith  
 Sony Music Entertainment  
 Theodore R. and Vada S. Stanley  
 Starbucks Coffee Company  
 The Sunbridge Foundation  
 Estate of Leonard Surratt  
 Estate of Samuel H. Talley  
 Target  
 Daniel M. Tellep  
 The David Tepper Charitable Foundation Inc.  
 The Tides Foundation

TOSA Foundation  
 Trehan Foundation  
 William D. Unger  
 United Nations Foundation  
 The UPS Foundation  
 Estate of Julia Van Munster  
 Visa Inc.  
 Deidra J. Wager  
 The Walmart Foundation  
 Weyerhaeuser Company Foundation  
 Michael and Geraldine Wiles  
 A. Morris Williams Jr.  
 Thomas L. Williams Trust  
 The Willow Springs Foundation  
 Wisconsin Evangelical Lutheran Synod  
 The Robert W. Woodruff Foundation

### Global Leadership Society

**FY20: \$1,000,000+**

Abbott  
 Anonymous  
 Bloomberg Philanthropies  
 Margaret A. Cargill Philanthropies  
 The Coca-Cola Company  
 Estate of J.W. Culler  
 ECLT Foundation  
 Bill & Melinda Gates Foundation  
 The Nancy Olmsted Kaehr & Michael G. Kaehr Endowment  
 The Kendeda Fund  
 Latter-day Saint Charities  
 Mars Inc.  
 Mastercard Impact Fund  
 The MathWorks Inc.  
 Procter & Gamble Company  
 Sall Family Foundation  
 Sheryl Sandberg and Tom Bernthal  
 Estate of Julia Van Munster  
 Thomas L. Williams Trust

### Founder's Council Violeta Chunchu Society

**FY20: \$500,000-\$999,999**

Anonymous (2)  
 The David R. & Patricia D. Atkinson Foundation  
 Willard Brown  
 Helen and Harold Buirkle  
 Cargill Inc.

Colgate-Palmolive  
 The Ford Foundation  
 Gap Foundation  
 Estate of Robert W. Goodman  
 Hutchins Family Foundation Inc.  
 Estate of Doresa Jones  
 The Jordan Family  
 William S. and Jane R. Mosakowski  
 The David and Lucile Packard Foundation  
 The PepsiCo Foundation  
 Ripple  
 SAS Institute Inc.

### Founder's Council Lydia Marshall Society

**FY20: \$250,000-\$499,999**

Amway  
 Anonymous (3)  
 Estate of Barbara L. Bacich  
 Paul and Mary Jan Bancroft  
 Benevity  
 Donald Burris Trust  
 Annie E. Casey Foundation  
 Center for Disaster Philanthropy  
 Deloitte  
 Facebook  
 The Frees Foundation  
 Global Environment Technology Foundation  
 Humanity United  
 Justin S. and Hilarie V. Huscher  
 The Liao Revocable Trust (Virginia Liao)  
 Elsie R. Mannweiler Revocable Trust  
 William E. Miller Charitable Remainder Annuity Trust  
 Mondelēz International Foundation  
 New Venture Fund  
 Open Society Institute  
 Chang K. Park  
 The Peierls Foundation  
 PepsiCo Inc.  
 The Pfizer Foundation  
 Public Consulting Group  
 TOSA Foundation  
 The UPS Foundation

**Founder's Council Murray  
Lincoln Society**

*FY20: \$100,000-\$249,999*

AB InBev  
Abercrombie & Fitch Management Co.  
Airbnb  
Anonymous (5)  
James and Marietta Bala  
Bank of America  
Peter and Sarah Beshar  
Thomas C. Bishop  
The Arthur M. Blank Family Foundation  
Eduardo Castro-Wright and Fabiola  
De Castro  
The Chubb Corporation  
Cisco Systems Inc.  
Don W. Cleveland and Margaret A.  
Lopata  
Dick Crawford  
Eleanor Crook  
The Davee Foundation  
The Charles Engelhard Foundation  
Bert E. and Candace M. Forbes  
Gap Inc.  
Michelle Griffin and Thomas Parker  
Guilford Fund  
Eliyahou and Britt Harari  
Wayne R. and Camellia A. Helsel  
Glenn H. and Deborah Dow Hutchins  
IMVU  
Kilpatrick Townsend & Stockton LLP  
Adele Kovanic Trust  
Latham & Watkins LLP  
Morgan Stanley  
Susan O'Connor  
Oak Foundation  
Obediah Fund of the Coastal  
Community Foundation of South  
Carolina  
Olivela Inc.  
Jim Pentecost  
Genie and Scott Randell  
Rotary Club of Atlanta  
SAP Concur  
Robert Scharper  
Estate of Abraham Sheingold  
Estate of Jeffrey Skeer  
Timothy J. and Lisa Sloan  
Brian J. Smith and Laurel Spellman  
David A. Smith and Nancy H. Smith  
The Summit Foundation  
The Ping Y. Tai Foundation Inc.

Joyce and William Thibodeaux  
United Nations Foundation  
Diane von Fürstenberg Family  
Foundation  
Deidra J. Wager  
Twilio.org Impact Fund  
Sheldon Wolfe Revocable Trust  
Women's Refugee Commission Inc.  
World Cocoa Foundation

**Founder's Council Lincoln Clark  
Society**

*FY20: \$25,000-\$99,999*

David T. and Jean K. Akers  
Mehrddad and Sholeh Amanat  
American Express Company  
Anonymous (25)  
John and Wendy Anzalone  
AT&T  
James N. Bailey  
Baldrige Family Foundation  
The Dr. Martin Balsler Impact Fund  
Dr. Cori Bargmann  
Ken Birman and Anne Neiryneck  
Estate of Henry L. Bockus  
David and Katherine Bodnick  
The Branson Family Foundation  
James and Adean A. Bridges  
Finn Brooks Family Foundation  
Brown Family Endowment  
William M. Brown Living Trust  
Estate of Roland Buck  
Buddhist Global Relief  
Mary Catherine Bunting  
Molly Burke  
Susan Okie Bush  
The Cable Company  
The Virginia Wellington Cabot  
Foundation  
John Stephen Caflisch and Elizabeth  
Caflisch  
Charles C. Cahn Jr.  
California Community Foundation  
Thalia and Michael C. Carlos  
Foundation  
Ted and Catherine Carlson  
Lee Carpenter-Long  
Jason Carroll  
The Chicago Community Trust  
Cisco Foundation  
Citi  
Heinke K. Clark  
Eric Clausen  
Cogan Family Foundation  
Richard Cohen  
Estate of Ralph Cohen  
Colgate Palmolive Co.  
Estate of Steven L. Conrad  
Elizabeth Crowe Trust  
Susan M. Crown  
Stephen Cumbie  
Glen A. and Lynne Cunningham  
Jacob W. Dale and Jason Liptak  
Laurie Daniel  
DC Capital Partners  
Steven Denning  
James and Carol Dew  
Discover Financial Services  
DLA Piper  
Carole and Tommy Dortch  
Dr. Scholl Foundation  
John D. Dreisbach  
Douglas Dunn and Donna Gaab  
Morrie L. Eakin Revocable Trust  
Estate of Laura Delano Eastman  
Cree Eberly  
Bart D. Ehrman  
The Ellis Foundation  
Equifax Inc.  
Stephen Esser and Dana Dortone  
Scott C. and Elizabeth P. Evans  
Fiserv  
Sibyl Frankenburg and Steven Kessel  
Brian Friedman and Vanessa Slinger-  
Friedman  
Gameloft  
Robert R. Geppert Trust  
Gerszewski Family Revocable Living  
Trust  
Deirdre M. Giblin and David B. DuBard  
Global Water Challenge  
Global Impact  
Pam and Bobby Glustrom  
The Donald G. Goodwin Family  
Foundation Inc.  
Jill R. Gordon  
The Hain Celestial Group Inc.  
Estate of Louis W. Halk  
Jay Hallik and Vanessa Hallik  
Jack and Caroline Hardin  
Harris/Kennedy Bypass Trust  
Susan Hassan  
Raymond Scott Hawks

Head Family Charitable Foundation  
Hearst Communications  
Nicholas S. and Susan D. Hellmann  
John T. and Felicia K. Hendrix  
Carl Hess and Tracy Pirnack  
The William and Flora Hewlett  
Foundation  
Hoag Family Charitable Foundation  
Karen and Mark Holzberg  
Robert Horowitz  
Julia Huiskamp  
David L. and Sara E. Hunt  
The Ann Hyatt and James Donald  
Kenney Family Foundation  
Eugene P. Jacoby  
Alan K. and Cleidith M. Jennings  
Foundation  
Estate of Alan K. and Cleidith M.  
Jennings  
Tom and Edwina Johnson Family  
Foundation  
Radhika Jones  
Steve Joyce  
Kabbage  
Estate of Harry Kalish  
Rosalind and Michael Keiser  
Estate of Rosemary A. Kelly  
Joshua Klayman  
KLM Foundation  
Julie Konigsberg  
Kramer Partners LLP  
Cynthia Kriebler  
Ronni S. Lacroute  
William Laggren Life Insurance  
Estate of Sadie Lapinsky  
The Family of George M. and Mary Jane  
Leader  
Dennis H. Leibowitz  
The Leibowitz and Greenway Family  
Charitable Foundation  
Estate of Shirley U. Leonard  
Levi Strauss Foundation  
Jared Levy and Alba Alamillo  
The Lichtenberger Foundation  
Lionel Arnold Trust  
Juan & Gisela Llibre Family Trust  
Estate of Ingeborg Lock  
Lubert Family Foundation  
Peter H. Lunt and Pilar Vasquez-Lunt  
Carolyn and Martin Luond  
Tessa Lyons and Sam Steyer  
Tim Main



Dr. Alex Malaspina and Mrs. Doris Malaspina  
Stephen F. and Susan Z. Mandel  
Frank and Susan Mars  
Estate of Paul S. Marsh  
Mary Kay Inc.  
The Mary Kay Foundation  
John W. and Annie Mason  
Rita and Kim McCauley  
Lisa and Bill McGahan  
Ken McKee  
M. Craig McKibben and Sarah E. Merner  
Miles W. McLennan Charitable Remainder Unitrust  
Sanjeev Mehra and Karen Peterson Mehra  
Lizanne and Robert Milton  
Joseph H. and Cynthia G. Mitchell  
Robin Moriarty  
Multiple District 19 Lions  
NBA Properties Inc.  
Nordstrom  
Estate of Victoria Nott  
The Colleen & Sam Nunn Family Foundation  
Michelle Nunn and Ron Martin  
Robert D. O'Toole  
Estate of Eileen Oehler  
Richard E. and Roseanne B. Packard  
Paradise on Earth Fund  
Estate of Rosalba Pardo  
PayPal  
Mary Peterson  
Kathleen Peto and Daniel Rice  
Kathryn and Mark Petralia  
Pines Family Trust  
The Reed Foundation  
Martha L. Rees  
Philip E. Resch Living Trust  
The RFP Fund  
John and Cammie Rice  
Julia Rose  
Robert and Brenda Rosebrough  
Dr. Samuel Sessions  
Estate of Andrew M Sessler  
Raymond H. and Theresa A. Shinn Irrevocable Unitrust  
Jon and Kim Shirley  
Silicon Valley Community Foundation  
Steve and Eileen Simmons  
Harold Simmons Foundation

Theodore and Sally Simpson Charitable Remainder Unitrust  
Southface Energy Institute  
Malcolm K. and Penelope J. Sparrow  
The Spurlino Foundation  
William Stanhope and Kristen Keirse  
Elizabeth Steele  
Mr. Hayes Stover and Mrs. Patricia Stover  
Scott M. and Lisa G. Stuart  
Estate of Richard W. Thomas  
Richard W. Thomas Trust  
Tijori Foundation  
Tishman Speyer Properties  
Clyde Tuggle and Mary Streett  
United Nations Office of Project Services  
The VF Foundation  
Marc K. Whitehead and Sheila M. O'Brien  
Morris A. Williams  
Werner Wortsman Trust  
Caleb and Johanna Wright  
Monica Yandow

**Founder's Council Arthur Ringland Society**

**FY20: \$10,000-\$24,999**

Iman Abdulmajid  
Kenneth L. Adams  
Michiko and Yoichi Aizawa  
Harry & Jane Alburger Charitable Trust  
Samuel and Angie Allen  
George and Herawati Alvarez-Correa  
Holly Amburgey  
Bonita Anderson  
Craig G. Anderson  
Anonymous (11)  
Aziz Ansari  
Shabana Ather  
The Sandra Atlas Bass and Edythe & Sol G. Atlas Fund Inc.  
Aviv Foundation  
Frank W. Babka  
Ravi K. and Jill L. Bajaj  
Margaret D. and Matthew T. Balitsaris  
Cecile Falk Balsler  
Jon and Barbara Barnes  
Dennis M. Barry  
Julia H. and Michael A. Becke  
Michael G. and Diane Beemer  
Linda and Rodney Benjamin



Kenneth Berliner  
Lyle G. and Susan A. Best  
William Biggs  
Donald and Sheila M. Billings  
Ms. Katherine Bishop  
Edmund H. Blakeman Trust  
Marcia W. Blenko and Don B. Blenko Jr.  
Madeline and Alan Blinder  
John W. Bloom  
Robert and Suzanne Boas  
Vidya S. and Sally Bobba  
Joseph and Marguerite Boggan  
Darlene Bookoff  
John C. Boothroyd  
The Boston Foundation  
John and Margaret Brennan Charitable Trust  
The Briar Foundation  
Johanna Brookner  
Charles C. Brown and Kathleen Ford  
Brown Advisory  
Joel M. Brown Living Trust  
Charles W. Bruno  
Estate of Mary Bubanovich  
The William M. Burke Revocable Trust  
Ambassador Dwight Bush Sr.  
Martha Campbell  
Walter C. D. Carlson and Debora De Hoyos  
Mr. Richard Carroll  
Gerhard and Regina Casper  
CDW Corporation  
Dawn Chamberlain  
Ms. Sylvia Chin  
John R. Cleveland  
Frank P. Cofone  
Virginia F. Coleman  
Ruth M. Collins  
Shawn Concannon  
John and Stephanie Connaughton  
William Cook  
New York Presbyterian Hospital  
Casey Fowles Cox  
Gerald R. and Jeanne Curtis  
DAF  
Mr. Edward Davis  
Richard T. and Sally S. Dawson  
The Dayton Foundation  
Debicki Foundation  
Estate of Michael David Diberardo  
Mark Dickinson

Dine Brands Global Foundation  
Shirley A. and Terry Dobson  
Kenneth Douglass Foundation  
Michael and Regina Dowd  
Ruth Doyle  
Dume Wolverine Foundation  
Ann P. Dursch  
Lelah Dushkin Irrevocable Trust  
Ellen Duttweiler  
The Walter and Ursula Eberspacher Foundation  
Robert J. and Kimberly W. Eck  
Cathy Engelbert  
The Entertainment Industry Foundation  
Estate of Charlotte M. Erb  
Ernst & Young  
Todd and Dorothy Evans  
Herbert and Jeanette Evert  
Helen and Edward Felsenthal  
David L. Ferrera and Vinita Chopra Ferrera  
Estate of Lowell I. Figen  
Firsthand Foundation  
Madlyn and Richard Flavell  
Estate of Margaret Foley  
John Gally  
GE Foundation  
Geller & Company  
Andrew and Karen Ghertner  
Gilman Ordway  
Charles and Mary Ginden  
The Lanier Goodman Foundation  
Geoffrey A. Goodman  
Google  
Elizabeth Gorman and Mark Kritzman  
Martin and Amy Granger  
Jim and Carol Green  
Estate of Thomas J. Green  
Mrs. Ruth Greenstein and Mr. David Seidman  
Jeffrey Greve and Janis Kahn  
Robert I. and Susan S. Guenther  
Winston and Helen Guest  
Gail and Yogesh Gupta  
Estate of Janice E. Gustin  
H C D Foundation  
The Marc Haas Foundation  
Linda and Frederick Haddad  
Mona Hajj  
Charlotte and Floyd Hale  
Marianne C. Hall Trust



PERU

Douglas and Mary Hallward-Driemeier	June Mathis	Charlotte Perret	Lois and Arthur Stainman
Douglas W. and Tsognie Hamilton	Peter and Robin Matt	Mr. David Peyton	Bettye Statham Charitable Unitrust
Barbara J. Hanlon	Brian K. and Anne S. Mazar	Dede Pickering	Paul Steidlmeier Revocable Trust
James and Sarah Harrington	Pamela B. McCabe	Christopher and Tara Poseley	Harold and Lambertha Stier
Nell M. Harthorn	McCormick & Company Inc.	Gen. Colin Powell and Mrs. Alma Powell	Campbell Steward
Mark Heising and Elizabeth Simons	David McCormick and Dina Powell	Power Corporation of Canada	Martin Sticht
Burke Hendrix	Estate of Dorothy E. McGinnis	Margaret Powers Life Insurance	Helen Stoffels Charitable Remainder Trust
Julie and Bayard Henry	Martin McGlynn	Amol Prasad	Diana L. Strassmann and Jeffrey Smisek
Wes Hepler	Vaughan McKee Family Trust	Kevin Pratt	Stripe
John R. Herr and Kathleen M. Doyle	McMaster-Carr Supply Co.	R.K. Squire Company	Martha and William Stueck
Estate of Laura E. Higginbotham	Helen R. McShane	Rafanelli Events	Harry Sugarman Estate and Trust
Paul A. Higgins	Chris Mead	Connie and John Rakoske	Estate of Dorothy J. Swanson
Frank and Lora Holsenbeck	Estate of Beverly Melnikov	Dinkar Rao	Tableau Software
Winnifred Howard Trust	Microsoft Corporation	Estate of William Reinsel	Brian Taylor
Carl C. and Marilyn Hug	The Miller/Allen Charitable Foundation	Theodora Retsina	The David P. Tenberg Charitable Foundation Inc.
Alan and Glen G. Husak	Christopher D. Miller and Catherine McNamee	Estate of Michal J. Rinaldi	Ronald L. Thatcher
InterAction	Therese Miller	Sarah F. Roach	John A. Thompson Jr.
Raymond Jablonowski	Gail Milliken	Margot Robbie	Ned A. Tisserat and Jan E. Leach
The Gray Jacklin Charitable Trust	Steve and Hala Moddelmog	Jim Rochelle	The Trio Foundation of St. Louis
Paul J. and Deborah K. Jansen	Garrett Moran and Mary Penniman	Douglas L. Rogers	Paul Turner
The Jay and Rose Family Foundation	Lydia and Thomas Moran	Estate of Nelson H. Rose	Alan and Chris Vickery
Richard J. and Involut V. Jessup	Charles V. Moran	Charles Ross	Frederic Villoutreix
Julia G. Johns	Merle and Ellen Morgan Gift Fund	Leo N. Ruelas & Susan L. Sherman Revocable Trust	Jasveer Virk and Paul Kavanagh
Johnson & Johnson	Mouat Charitable Trust	John W. Ryan and Jenny P. Scheu	Paul and Susan Vogel
Richard Jones	Muller Shipping	Salesforce	Dennis Walo
The Ina Kay Foundation	Estate of Patricia Muller	Carrie P. Sample	Guido P. Walter Trust
Robert Keilbach	Thomas Mullooly	Jesse S. and Carrie Sanders	Doug and Tara Weckstein
Tim Kelley and Chung-Wei Ng	Cambyr Nelson	Santander US	Rosalie J. Coe Weir Foundation
Sam Kellie-Smith	Luellen J. and Ronald G. Newmann	SAP	Jack Weisberg Charitable Foundation
Kevin J. and Pamela M. Kelly	Arthur C. Nielsen Jr. Family Charitable Trust	Dan M. and Pam Sargent	Estate of Jean Wellisch
Michael A. and Dona M. Kemp	Pamela Norley and Donn Randall	Kenneth and Marjorie Sauer	Joachim F. and Rose D. Wernicke
Kering Foundation	The William and May D. Norris Foundation	The Schimmel Family Foundation	David J. Whippo
Richard and Gloria Kerns	The Honorable Sam Nunn and Colleen Nunn	The Helen and Alex Schlaffer Foundation Trust	Nancy G. Whitney
Kindergarten Unit Foundation	Maureen O'Hara and David Easley	Scott Schoen and Nancy Adams	Mr. Richard Wiener
Paul L. and Berta Klopsch Trust	Matthew P. and Ellen O'Loughlin	Mark Schupack	Michael and Geraldine Wiles
Robert Koch	Oldfield Family Trust	Seattle-Sonoran Foundation	Kimberly Williams-Paisley
Marlise C. Konort	Pat and Linda Olney	Estate of Margaret A. Selby	Edward and Barbara Wilson
Pauline P. Lee	Optimum Compounding Pharmacy	Richard and Carol Seltzer	Allen and Ingrid Wisniewski
Les Oiseaux Foundation	Orbia	Sudhir Shah	The Carvel and Margaret Wolfe Charitable Fund
Janet Lewis	Steven R. and Sandy S. Ormiston	Benjamin T. Shaw	Tyler Wolfram
Estate of Helen Lightner	Amy and Paul Osenar	Susan Shraibati	Susan Yarian
Gregory Lincoln	Estate of Leonard R. Overton	Sikand Foundation Inc.	Daniel Yates and Tobie Whitman
The Litterman Family Foundation	Odette L. Pantelich Trust	Patricia J. S. Simpson	Michael and Diane Ziering
Edward and Claire London	Joe and Frances Pao	Skyscrape Foundation	
Agatha and Steve Luczo	Ashok Patel	Estate of Betty-Jane Sobin	
Wendy and Robert Macdonald	Seth Peavey	Elizabeth Solomon	
The Macedonia Fund	Peine Family Fund	Jonathan Solovy and Stacey Fisher	
Joseph R. and Linda K. Manthey		Martin J. Spalding	
Maurice Marciano Family Foundation			
Joseph G. Martin Jr.			
Louis S. Mastriani			





**Thomas L. Williams Legacy Society**

*Donors who have generously included CARE in their estate plans*

- James and Adele Abrahamson
- Susanna Adams
- Timothy A. and Ella Adams
- Ade Ademola
- N. Philip Adkins
- Robert F. Adkins and Dagmar Bryant
- Doris L. Adler
- David T. and Jean K. Akers
- Louis R. Albrecht
- Gloria Albritton
- Harriet and Dan Alexander
- Millette Alexander
- Doug Alfassa
- Barbara and Gilbert Allen
- Cecilia Allen
- Janet K. Allen, M.D.
- John and Deanie Allen
- Rebecca Allen
- Ursula Alletag
- Bernard R. Alvey
- Howard I. and Nancy Amols
- Nancy K. Anderson
- Sidney and Rosalie Anderson
- Vera Anderson
- Judith Andreica
- Paul Anger
- Anonymous (71)
- Thomas A. Anzalone
- Isabel Arenas
- Areta M. Arlen
- Maria Armistead
- Helga Arndt
- Craig and Rekha Arness
- Ruth Askins
- Conrad D. and Eva J. Babb
- Betty Baer
- Elizabeth W. Baer
- Helen Holt Baillies
- Paul Baker
- James and Marietta Bala
- Mary Balfour
- Lenor Balme
- Michael Balogh
- Richard B. and Susan E. Balsley
- Jacquelyn Bamman
- James and Rosamond Barber
- Marvin Barofsky
- Patricia Barrett
- Robert and Margarita Bartels
- Angela Bartoli
- Jean Batten
- Mr. Phillip Battey
- Dale Bauer
- Kenneth A. and Linda Bauer
- Jenny Baumgartner
- Michelle Baviera
- Alicia Fisher Beaty
- Vernon Beck
- Douglas Beech
- Lawrence and Sharon Beeman
- Selma Belajec
- Peter L. and Bernice K. Bender
- David R. Benedik
- Cynthia Benner
- Katherine Berg
- Lawrence Berg
- Carol M. and Robert W. Bertrand
- Eric and Phoebe Beu
- Lynn Biddle
- J. and Amy Biggs
- Marjorie Haldeman and Madeline Bingham
- Charlotte Binhammer
- Karen Bird
- James A. and Bernadine Ann Biske
- Charles Bisselle
- Emery Bjerkmann
- Terry R. Black
- Charles A. Blackburn
- John W. Bloom
- Annetta Bloxham
- Gerald H. Blum
- Susan Blumer
- Raymond and Mary Boehm
- Sigrid Boehm
- Darlene Bookoff
- Wendy Bost
- Madeleine I. Boucher
- Veltin Boudreaux
- Catherine Bowers
- Richard and Gwen Bowlby
- Joan Brennan
- Alice L. Broner
- Elayne B. Brown
- Emily Brown
- E. Bruhns
- Joseph T. and Ann L. Buckley
- Jay and Carolyn Buffenmyer

William and Carol Burke	Martha Corkran	Douglas Dunn	Mr. George Ftikas
William J. and Joan Burke	H. James and Mimi Cornelius	Elizabeth Dunn and Paul D. Gader	Jeff Furst
Ruth K. Burns	Orlando and Francine Costa	Michael Dunne	Alice Gafner
Joseph Bursel	Paul E. Costantino	Louis Dupre	Peter and Donna Gagne
Charles and Dorothy Burton	Robert Couvson	Lynne Durrant	Richard E. Galardy
Glenn Butt	Michele and Rudi Cowl	Ann P. Dursch	Clara R. Garber
Ione Byrnes	JoAnn Cox	Diane M. Dwyer	Paul F. Gariepy
Katherine Cafazzo	Leslie H. Cox	Kathleen Eagan	Peter Gartner
Barbara J. Cain	Alyce M. Cranston	James Eberhardt	Gary and Caryl Gaubatz
Robert P. and Burkie E. Callaghan	Dick Crawford	James Eder	Robert Gaul
J. William Callahan and Celia Livermore	Mevis Crawford	Helen Edgerton	Hilary Gearon
Katherine Cameron	Stephen Crawford and Liliane Floge	Donald Elder	Gerry Geischer
Helen R. Cannon	Michael and Gloria Croft	Eleanor English	Phyllis Geist
Patricia H. Carcich	Loriel Cross	Ellen Eppers	George Giles
Matthew Careb	Susan M. Crown	Carmine Charles Ercolino	Pauline Glabman
Alpha Carlson	Marilyn Cummins	Christine Erickson	Marvin Glyder
Peter Carothers	Susan Curry	Jay and Karen Eubanks	William Goggin
Charles W. Carson Jr.	Annie Curtis	James M. Ewing	Janina Golab
Gladys Carvajal	Rose D'Alisa	Melinda Ewing	Martin and Mary Gold
Margaret Cascieri	Judith Dalton	Meridel Fahst	Christina Goldstein
Robert and Osla Case	Laura Darius	James and Diane Fails	Richard Goldstein
Ruth W. Catton	Walter J. Daub	Leonard Fairorth	Stanley Goldstein
Valerie Cavin	Annie Davis	Darlene K. Falk	Janice Good
Morton Celler	E. Davis	Louise Farrell	Bernice Goodman
Jean Chalmers	Mary Ellen and Charles Davis	Paul A. and Robin R. Fast	William Goodman
Edward Chase	Emily and Rutger de Quay	Linda R. Ferrill	Ronald Gordon
Iris Chastain and Howard Watson III	Ivan De Soto	Dolores Ferrin	Arleen Goscinski
Thelma Childs	Barbara Dearth	Joanne Fessler	David F. Goslee
Carl W. and Sonya Christensen	Linda Deeter	Gaye Feuer	Christopher Gowman
Brian and Candy Christenson	Gaylene Defore	Walter and Natasha Field	Frederick V. Grady
Debra Cipoletti	Katherine Degnan	Gregory Figueroa	Sonia Graham
Frances Clagett	Bonnie DeHollander	John Fischer	Kenneth Graupner
James and Diana Clanahan	Jeanette Dehus	Norman Fischer	Eileen Gravel
Pauline Clance	Wilfreda J. DeMille	David Fisher	Walter Gray
Lewis Clapp	Nicholas and Dolly Demos	Cheryl Fleisher	Lisa Green
Elizabeth Clark	William Demshok	Arthur Fleming	Robert Green
Heinke K. Clark	Dolores Denaro	Paul Flick	Joseph Greenberg
Stetson Clark	Steve D. Derne, Ph.D.	Lillian Fok	Gerald B. Greenwald
Eric Clausen	Ami Desai	Michael Forbes	Thomas and Margaret Gregory
Elaine Clawson	Edward Dey	Norma Forbes	Gary and Jane Greiling
Eugene Coe	John DiCesare	James and Nancy Ford	Donald P. Griffin and Bonnie M. Marron
Frank P. Cofone	Henry Diekow	Lionel E. and Doris Ford	Edward Griffin
Nancy K. and Robert C. Cole	Sharon Doll	Suzanne Forman	Stephanie Griffin
Michael J. Collins	Armando Dominguez	Gregory C. Fosselman	Charles Grimes
Jean Colvin	Marian Donnelly	Eileen Foster	William and Marilyn Grist
Margaret Comstock	Anna Dorsey	John D. Fox	Dianne Gruger
Sally Congleton	Allen C. Dotson	William C. Fox Jr.	Iris Gruwell
Howard Conn	Kenneth Douglass Foundation	Agnes M. Franz	Sara Gwynn
Kathryn L. Corbett	Dean and Donna M. Draper	Judith Frazer	Linda A. Habib
John Corey	John D. Dudley	Mary Freehill	Martha Hacala
	Ellen Dugger	Fay Friedman	Patricia Hainsworth

Donald R. Hall	Harriet Hoskyns-Abrahall	Arba Kenner	Kathy Lippert
Phillip Hall	Ann M. Hudock	Margaret Keppi	Drew Lippman
Ethel Halsey	Stephen M. and Nora Hughes	Eileen C. Kersey	Thomas W. Lloyd
Everett Hambly	Ann Hulen	Paul and Maryellen Kerzner	Mitzi Loftus
Cecily Hancock	William Hummell	Leslie Kessler	Richard B. Logan
Lynne Hansen	Joseph V. Huntington	Laila Khalil	Leonard F. Lombardi
Robert D. Hargrove	Robert Hurst	Helen Khan	Monte Long
Maxine Harmon	Lucinda F. Huttlinger	Chris A. and Patty Kindred	Melanie Loo
Pollyana Harmon	Hai Huynh	Richard Alan King and Cinda Herndon-King	Christine Lopez
Irmtraut E. Harris	Brian Ellis and Sondra Ickes	Charles King Sr.	Roberta Lord
Martin and Tyree Harris	Vito Ippolito	Verne Klepac	Warren Lowe
Nell M. Harthorn	M. Jacobs	Vrinda Knapp	John Lukens
Donald Hastings	Jerome and Doranne Jacobson	Elmer Knief	Lee Roy and Lisa M. Lumpkin
Laurel Haug	Sidney and Sandra Jacobson	Jim and Nadine Kobs	Jane Lusk
Eva Havas	Michael Jagner	Ellen R. Koehne	Elizabeth M. Lutas
Janice Hawes	Mary Jalics	Kurt and Sandra Koetter	Albert Lyles
Sue Hawes	Klara James	Doris E. Kolb	Marianne Lynch
Mrs. Laura Heady	Paul J. and Deborah K. Jansen	Stanley W. Krauhs Jr.	Marklyn Lynn
Roberta Heath	Allen Jedlicka and M. Wendelene Brudevold	Karen Krick	John Lyons
Raymond Hebert	Joseph and Jeannine Jeffs	Robert Kroder	Bill Lyshak
Mary Elizabeth Heironimus	Ted M. and Frances C. Jenkins	Gene Kuechmann	C. Diane Macaulay
Robert Helbig	Julia G. Johns	Robert R. Kurz	David Maddox
Wayne R. and Camellia A. Hesel	Guy and Barbara Johnson	W. Timothy Kuser	Elsie Van Maele
Michael Hemmelman	Marilyn Johnson	Anthony Kuzminski	Michael Maez
Richard and Cathy Hennessy	Martin H. and Laura F. Johnson	Karen Kwong	David R. and Fairlie A. Maginnes
Todd Henney	Mary Johnson	Robert Kyler	Mary La Magna
Constance Henry	Mary Katynski Johnson	Mary Lacaria	Humra Mahmood
Patricia Henry	Maynard and Christine Johnson	Ronni S. Lacroute	Martlene Mahta
William B. Herbert	Eileen E. Jones	Peta Lamb	Eugene and Marlen Maier
Truman Hershberger	Helen Jones	Louis and Ethel Lamberson	Rudolf A. Makkreel, Ph.D.
Diane Hetzel	Suryaram Joshi	Herbert Lane	Parameswara Malathi
L. and Laurie Hewie	David Justin	Joan Lange	Joseph Malina
Paul A. Higgins	Phyllis Kadle	Carl E. Langenhop	Ann M. Mallouk
Matthew Hilgendorf	Kunal Kamrani	Constance Lanseigne-Case	Gerald and Madeline Malovany
Edna M. Hill	Won Kang	Loretta Lape	Barbara Mandell
Robert H. and Marilyn B. Hiller	Harry. M. and Mary A. Kaplan	Nyla Larsen	John Mangels
James Hoffman	Michael J. and Dolores Kara	Nancy Latner	John F. Marcus
Erik Hoffmann	George Karnoutsos	Adella B. Latus	Ned and Francoise Marcus
Beth Ann Holcombe	Betty Kaspary	Gail Layden	Dianne Marek
Eloise Holden	Walter Katkovsky	Edward and Susan Leach	Anne Marelli-Kelly
Dennis Holeman	Jack L. and Mary E. Kay	The Family of George M. and Mary Jane Leader	Geoffrey and Katherine Margo
Christine Hollis	Stephen and Patti Kazlo	Bernice Leete	Richard A. and Kim Marin
Paul Holly	Carl M. Keefer	Deborah Leff	Estelle Markowitz
Ida Holtsinger	Anne Kelemen	Loreal LeGate	Alan Marks
Katherine T. Hood	Charles Keller	Nancy and Bruno Leginski	John Markwica
David A. Hoogakker	Thomas H. Keller	Gertrude Lepine	Linda Marse
F.M. Horn	Consuelo Kellogg	Claire Levine	Naomi Marshak
John Horne	Mark Kelso	Peter S. and Mary Frances Libassi	Catherine Martin
Lynn Hornsby	Charlene Kelson	Ruth Lindenstien	Ned Martin
Robert Horowitz	Renate Van Kempema		Robert Martin
Mary Horton			Soncie Martin



Irmgard Martino  
Michael Martz  
Bryant Mason  
Craig Mason  
Juanita H. Mast  
Louis S. Mastriani  
Margot Matthews  
Steven W. and Marcia L. Matthyse  
W. Steve Maxwell  
Yvonne Mazel  
Elizabeth McBrady  
Mary McCann  
Bruce McCarley  
Rita and Kim McCauley  
Patricia J. McConnell  
Betty Lou McCormack  
Joseph P. McCormick  
Robert W. McDonnell  
Patricia and Dennis McDougale  
John McGee  
Dorothy McIlraith  
John McIntosh  
Anna M. McKenna  
H. Richards McLane  
Marshall McLean  
Natalie J. McMahon  
Bernadette McMenamin  
Daniel McNamara Sr.  
Mary M. McPherson  
Estelle Meadoff  
Tushar Mehta  
Sheryl Mejia  
Betsy Melvin  
Clara Mercier  
Douglas and Carolyn Merrill  
Jeanine Metildi  
Timothy and Marilyn Michelson  
Peter Mickelson  
James Miller  
James M. Miller  
Kathryn Miller  
Merv Miller  
Richard and Margaret Miller  
Robert F. Miller  
Patricia Mischler  
Jay Mitchell and Marguertie Brown  
Gary Montie  
John B. and Kristi B. Mooney  
Eric Moore  
Jewel Moore  
Thomas and Susan Moore

Jane Olson Mordhorst  
Lois Morone  
Max Moroz  
Rosaline Morris  
Peter Moyer  
Gail Mueller  
Barbara J. Murray  
Paul and Ann Nace  
Shelley and Michael Nagel, M.D.  
Sheila Needleman  
Rebecca A. Nelson  
Geoffrey Newcomb  
James V. and Rosemary F. Newton  
Donald and Ellen Niewyk  
Bernard D. and Deborah P. Novgorodoff  
Paul A. and Gayle D. Nyhuis  
Timothy and Hyon O'Brien  
M. Anne O'Grady  
Colman O'Malley  
James and Nancy O'Malley  
Jeremiah T. O'Shea  
Robert D. O'Toole  
Mary Ellen Obert  
Archie Oftedahl  
Howard and Carolee Ogburn  
Frank Olbrish  
Victor Oliver  
Robert and Cheryl Olsen  
Anne Olson  
David Osborne  
Eileen Ossen  
Robert Pancner  
Larry Pansino  
Dennis and Susan Papadopoulos  
Carmen Pappas  
Nadine Park  
Norris Parker  
Patsy Paschal  
Ruth Patridge  
Jon Pearson  
Judith Peck  
Perry and Rosie Pedersen  
David R. and Cindy Peeler  
R. Bruce and Beverly M. Perry  
Toddy Perryman  
Rosalie Person  
Ken Peters  
Carroll Peterson  
Elizabeth Peterson  
W. Peterson



VENEZUELA

Ky Pham  
Dede Pickering  
Leon and Mary Pieschek  
Charlotte Pineda  
Marjorie Piscitello  
Harold and Shirley Pitz  
Susan Platt  
Mary Sue Ply  
Josephine K. Poling  
John Popovich  
Kathleen Presnail  
Ruth Prewett  
Grace Price  
Thomas S. and Margarent M. Purvinis  
Cordelia H. and Charles Puttkammer  
Phillip and Marietta Quinn  
Eric T. Quinto and Judith A. Larsen  
Joy Ramer  
Fernando Ramirez  
Alberta Randall  
Madhava and Prasanna Rao  
Judith Rappaport  
Joyce L. Rauhe  
Paul H. and Ruth A. Ravenna  
Barbara Rayson  
Irene Reece  
John and Ann Reed  
Roger Reed  
John E. Reichard  
Peter Reichertz  
Joan Reinhart  
Krista M. Reitz  
Nigel and Barbara Renton  
Edwin and Frances Resler  
Mary Reston  
David Franklin Reynolds  
Mildred M. Reynolds  
Alan Rice  
Jack and Patricia Rickly  
Bernard and Barbara Ries  
James and Nancy Riley  
Sarah F. Roach  
Betsy Robbins  
Edith and Cladice Rodgers  
Frank Rodrigues  
Joseph and Cindy Roebuck  
Loouella Romero  
Elizabeth M. Romney  
Jannie Rood  
Patricia R. Rooks  
Darold W. Rorabacher

Beth Rosenblatt  
Ronald Rossi  
David P. Rost  
David B. Roth and Cilla M. Sheehan  
G. Linn Roth and Jean Martinelli  
Roland Roth  
Ronald V. Row  
Christopher Rozell  
Margaret Rud  
Peter C. Ruenitz  
Laura Rushton  
Betty and James Russell  
Jenny Russell  
James and Lynda Rybak  
Tom Saavedra  
Carmen Saldena  
Neelam Salmen  
Barbara Sanders  
Elliott Sanders  
William Sapp  
Ann Sargent  
Leo Sartori  
Ben Schaibly  
Leoba A. Schallom  
Robert Scharper  
Horst Schastok  
Mary Schiesel  
Robert L. and Margaret A. Schmerker  
Peter and Naomi Schmid  
Steven Schmitt  
Karen Schneider  
Charlotte I. Schovaers  
Robert Schultz and Barry Walker  
Edith Schwartz  
Gail M. Sconing  
Elisabeth Seaman  
Ralph and Nancy Secoy  
Kathryn Sedlak  
Peter J. Sellon  
Robert Seymour  
Thomas H. Shake  
Clarence Shannon  
Lila Shapiro  
Joshua Shaver  
John A. and Anita Sheehan  
Phillp M. and Karen A. Sheridan  
Philip Sherman  
Vivien Shipley  
Roberta and Alan Shirk  
Jerry A. Shroder  
Helga Siegel



Fred R. and Susan J. Sievers  
Aileen Simon  
Jane Simon  
Margaret Ann Singer  
Johanna Singh  
William Sippel  
James N. and Marianne Skeen  
Eva Slane  
Carol Smith  
Patricia Smith and Paul Werner  
William J. Smith  
Shirlee Smolin  
Marika Snisak  
Constance Sofio  
Cynthia Soldat  
Michael Somma  
Martin J. Spalding  
Malcolm K. and Penelope J. Sparrow  
Joan Spivak  
Michael J. Spreitzer  
Barbara St. John  
Mary St. John  
Takako Starr  
Eugenia Staszewski  
Charles Steedman  
James and Kathryn Steele  
Bruce Stegmaier  
C. Roger Stegmaier Jr.  
Paul and Sara Steinfeld  
Edmund A. Steinhagen  
Charles Stendig  
Steve and Karin Stern  
Michael and Kathleen Stieglitz  
Harold and Lambertha Stier  
Mr. Charles Stoltz  
Howard E. and Joann B. Strauch  
George D. Strohmeier  
Donald Strombeck  
Gunter Strumpf  
Robert Sullivan  
Joe O. Swain  
Gary and Willa Swanson  
Gustave Swanson  
Flora Swearingen  
Darryl Swenson  
Marilyn Swenson  
Stephen Szucs  
Jenny Szymczak  
Veronica Sanchez Tapia  
Donald Tapp  
Edward Tarte

Helga Tarver  
Arthur T. and Doris H. Tees  
Asan Tejwani  
Joan Tennis  
Mary C. Thayer  
Theo Thevaos  
Fran Thomas  
John Thompson  
Joseph Thompson  
Mary Thompson  
Helen Thuronyi  
Cynthia J. Tollen  
Nancy E. Tomlinson  
Hristo Topalov  
Thomas Toporovich  
Peter and Kathleen Tovar  
Richard Townsend  
Peter Tropp  
Christopher Trunk  
Mirjam Tuovila  
Paul Turner  
Dianna Uchida  
Marie Ulanowicz  
Helen Umamo  
Fred and Helen Underleitner  
William D. Unger  
Helen Vamvas  
Abraham and Irene Van Rumond  
Carolyn Van Sant  
John Vandrick  
Svetislav Vanov  
Charles L. and Carol S. Vanover  
Martha Vargas  
Rodney Varner  
Anna C. Vaughan  
Anna Marie Schorn Vernot  
Penny Villgas  
Maria A. Vitello  
Mimi Voegelin  
Barbara Vogan  
Deidra J. Wager  
Elizabeth Wallis  
Dennis Walo  
Randy Walschaert  
Brian Wantling  
Denton Ward  
Patricia Ward  
Roger D. Warren  
Thomas E. and Zantha Warth  
Ron Wassel  
Jane Waterhouse

Gordon Watson  
Charles Weber  
Diane M. Weber  
Hildegard Weck  
Peter M. and Amy Weiler  
Marvin J. Weinberger  
Margaret Weiscopf  
M. Weisenstein  
Nancy Welfer  
Kathleen Welsh  
Elizabeth Wenrich  
Mary Werbaneth  
Joachim F. and Rose D. Wernicke  
Edwin J. Wesely\* and Marcy Brownson  
Alyssa Westover  
Judith Whetzel  
I.W. Whitesell Jr.  
Haven Whiteside  
Karen Whitlow  
Elizabeth Millard Whitman  
Cheryl Wilfong  
Coralie Williams  
Max Williams  
Theodore Williams  
William Willis  
J. Williston  
Randolph Willoby

Alida P. Wind  
Harry Winick  
Leo and Denise Wisseman  
Victor and Nancy Witman  
Kenneth and Gloria Woehrer  
Gabriele Wohlaer  
Edward O. and Willa J. Wolcott  
Joel Lynn A. Reitman Wolf  
David Wolfe  
Sue Wolff  
Donald Wood  
Paula Woodard  
Ruth A. Wooden  
Mary Woodward  
Judy and Warren Wright  
Mary Wright  
Dr. and Mrs. Yates  
Lucille Yauch  
Donna Young  
Ralph and Carolyn Younger  
Mary Youssef  
Kenneth and Stephanie Zimmerman  
Vera Zimmerman  
Margaret R. Zimmes  
James and Judy Zook  
Robert B. Zufall





# CARE leadership

## GLOBAL MANAGEMENT TEAM

### Stacy Aldinger

Chief of Staff and Strategy

### Claudine Mensah Awute

Vice President for International Programs and Operations  
Regional Director for West Africa

### John Aylward

Chief Mobilization Officer

### Tatiana Bertolucci

Regional Director for Latin America and the Caribbean

### Peter Buijs

Chief Financial Officer

### Madhu Deshmukh

Vice President of Program Strategy and Impact

### Hitesh Dharod

Interim Regional Director for Asia

### Melissa Heggie

Chief People, Equity, and Inclusion Officer

### Eric D. Johnson

General Counsel

### Deepmala Mahla

Interim Vice President for Humanitarian Policy and Practice

### Emma Naylor-Ngugi

Regional Director for East, Central, and Southern Africa

### Michelle Nunn

President and CEO  
CARE USA

### Sarah Taylor Peace

Chief Revenue Officer

### David Ray

Vice President for Policy and Advocacy, CARE USA  
President, CARE Action  
Acting Executive Director, U.S. Programs

### Michelle Routh

Chief Information Officer

### Nirvana Shawky

Regional Director for Middle East and North Africa

### Lona Stoll

Vice President of Impact and Innovation  
Chief Innovation Officer

## BOARD OF DIRECTORS

### CO-CHAIRS

#### Martha Brooks

Former President and COO  
Novelis Inc.

#### Glenn Hutchins

Chairman, North Island  
Co-Founder, Silverlake

### VICE CHAIR

#### Michèle Flournoy

Co-Founder and Managing Partner  
WestExec Advisors

### TREASURER

#### Kathryn Petralia

President and Co-Founder  
Kabbage Inc.

### SECRETARY\*

#### Eric Johnson

General Counsel  
CARE USA

### MEMBERS

#### Runa Alam

Co-Founder and CEO  
Development Partners International

#### Peter Beshar

General Counsel  
Marsh and McLennan

#### Eduardo Castro-Wright

Private Investor

#### Charlie Dent

Former Congressman and  
Policy Advisor

#### Jay Hallik

Managing Director  
Morgan Stanley

#### Everett Harper

CEO and Co-Founder  
Truss, The Infrastructuralists

#### Susan Hassan

Founder  
Sea Dune Partners

#### Paul J. Jansen

Director Emeritus  
McKinsey & Company

#### Radhika Jones

Editor-in-Chief  
Vanity Fair

#### Stephen P. Joyce

CEO and Director  
Dine Brands Global

#### Mohamed Kande

Vice Chairman and U.S. Advisory  
Leader/Global Advisory Leader  
PwC

#### Tessa Lyons-Laing

Director of Product  
Instagram

#### H. Conrad Meyer III

Private Investor

#### Valerie Montgomery Rice, M.D., FACOG

President and Dean  
Morehouse School of Medicine

#### Jane Mosbacher Morris

CEO and Founder  
To the Market

#### William Mosakowski

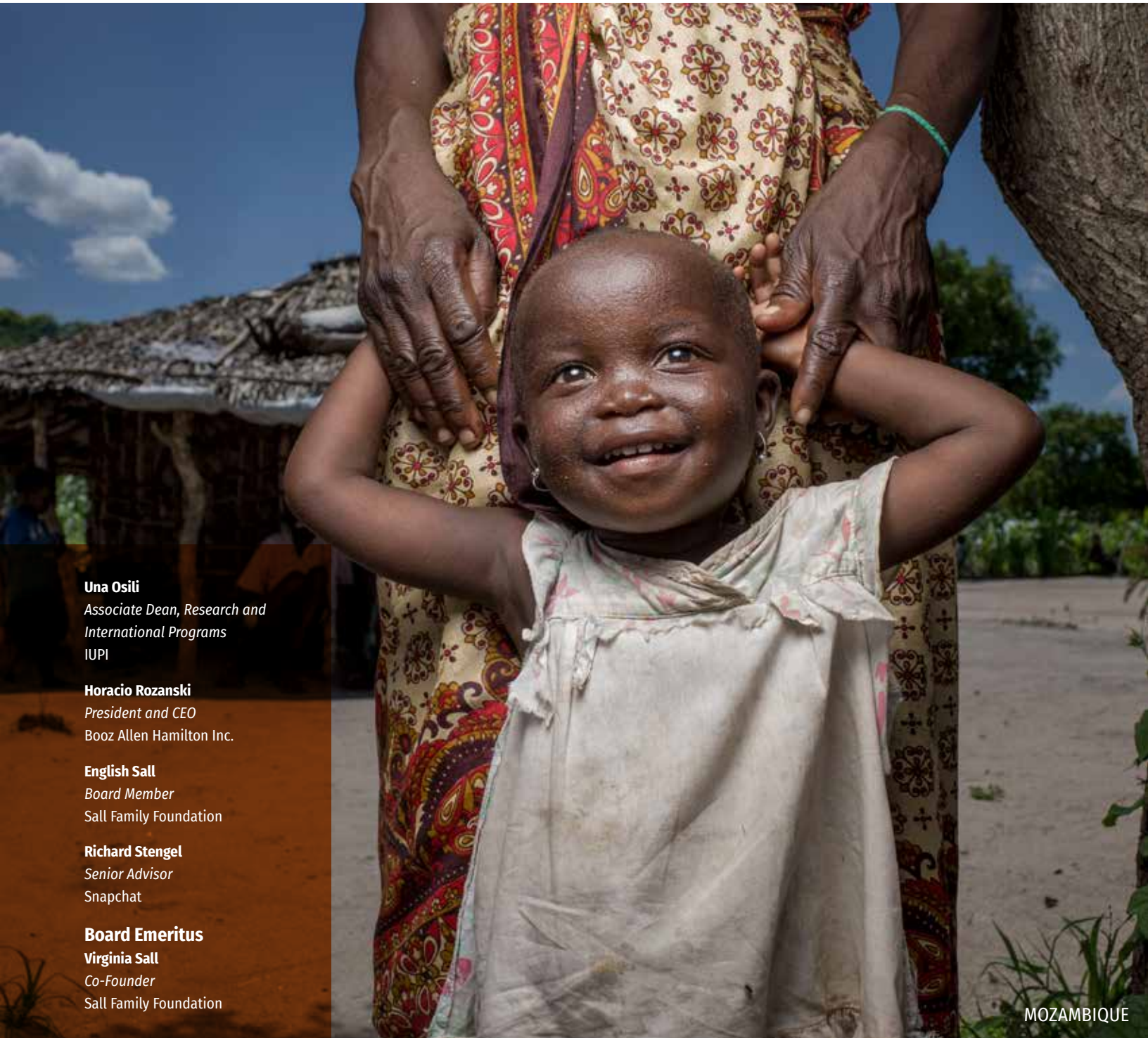
CEO and Founder  
Public Consulting Group Inc.

#### Michelle Nunn

President and CEO  
CARE USA

#### Christopher D. O'Leary

Former Executive Vice President  
General Mills Inc.



**Una Osili**

*Associate Dean, Research and  
International Programs  
IUPI*

**Horacio Rozanski**

*President and CEO  
Booz Allen Hamilton Inc.*

**English Sall**

*Board Member  
Sall Family Foundation*

**Richard Stengel**

*Senior Advisor  
Snapchat*

**Board Emeritus**

**Virginia Sall**

*Co-Founder  
Sall Family Foundation*

MOZAMBIQUE



# 2020 financial overview



## LETTER FROM THE CFO

2020 was an extraordinary year in many respects, with the COVID-19 pandemic impacting every single country on the planet. As a humanitarian organization, CARE faced two challenges: to adapt our global operations to ensure the continued delivery of services in new ways around the world, and to step up our public information, advocacy, and fundraising campaign to raise additional resources to help millions of people adapt their livelihoods and stay safe. CARE successfully implemented our business continuity plans and met these challenges head on. **As a result, we were able to serve 92 million people in over 100 countries, which for the first time ever included assisting families in the United States.**

As we approach the 75th anniversary of the delivery of the first CARE Package to the people of war-torn Europe in May 1946, we are proud to continue to use the resources entrusted to us efficiently—in 2020, we directed 92% of our total expenses to program activities.

**While our program expenses increased by 10% to \$608 million this year, we were able to reduce the costs of our supporting activities by 9%, to \$51 million.**

We are grateful for the generous support from hundreds of thousands of private donors in the United States and dozens of governments and institutions around the world, which enables us to advance our mission to save lives, defeat poverty, and achieve social justice. **We count on your continued support in 2021 so we can continue to innovate and adapt our work and deliver quality services in a rapidly changing world where the needs have only grown since the start of the pandemic.**

Thank you,

**Peter Buijs**  
Chief Financial Officer



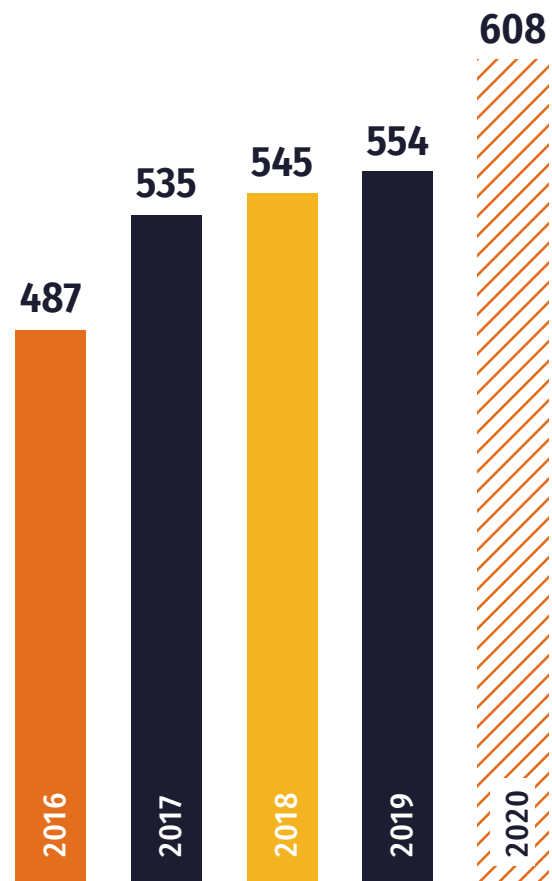


MOZAMBIQUE

We are proud that we were able to **grow** program expense over time, by **25%** from 2016 to 2020.

## Program Expense Growth

(in millions)



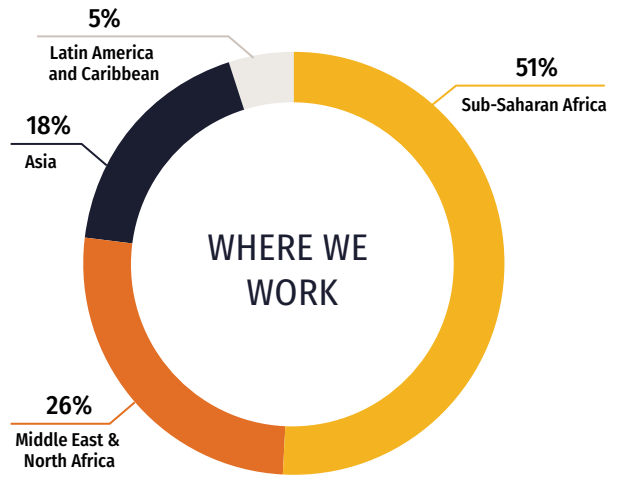
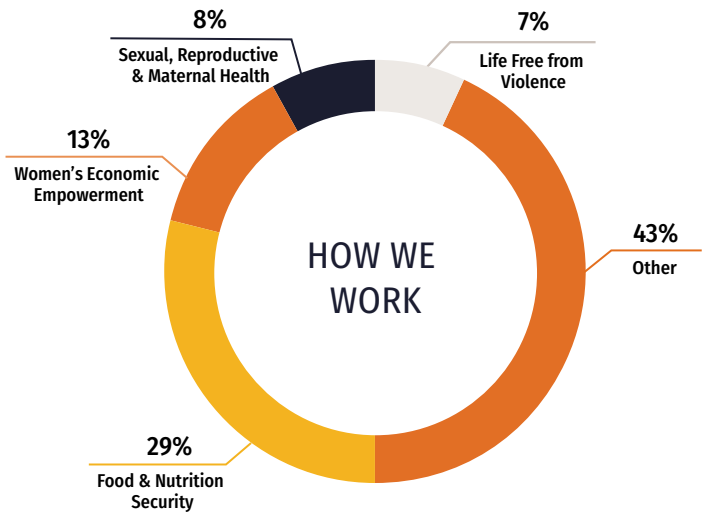
## CARE USA CONSOLIDATED STATEMENT OF ACTIVITIES

For the Years Ended June 30, 2020 and 2019

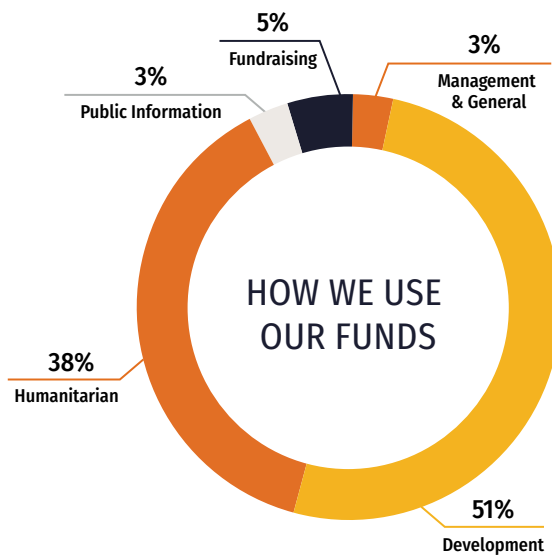
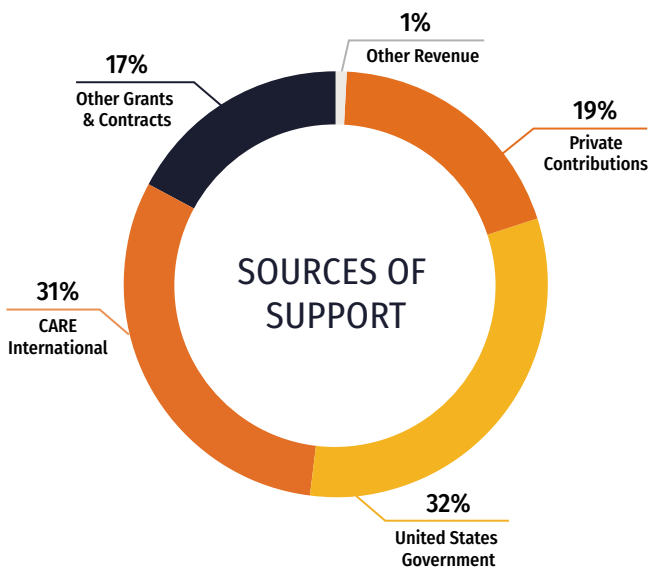
	Without Donor Restrictions	With Donor Restrictions	Total 2020	Total 2019
<b>Support</b>				
Private contributions	\$ 76,493	\$ 41,880	\$ 118,373	\$ 159,770
United States government	197,977	-	197,977	187,084
CARE International	189,791	-	189,791	175,799
Other institutional donors	105,017	-	105,017	85,629
Other revenue	3,352	17	3,369	5,219
Satisfaction of restrictions	86,002	(86,002)	-	-
<b>Total support</b>	<b>658,632</b>	<b>(44,105)</b>	<b>614,527</b>	<b>613,501</b>
<b>Expenses</b>				
Program activities	608,130	-	608,130	554,366
Supporting activities	51,210	-	51,210	56,307
<b>Total expenses</b>	<b>659,340</b>	<b>-</b>	<b>659,340</b>	<b>610,673</b>
<b>Investment income and other gains and losses</b>	<b>2,584</b>	<b>(1,873)</b>	<b>711</b>	<b>12,201</b>
<b>Total changes in net assets</b>	<b>1,876</b>	<b>(45,978)</b>	<b>(44,102)</b>	<b>15,029</b>
Net assets, beginning of year	64,846	311,152	375,998	360,969
<b>Net assets, end of year</b>	<b>\$ 66,722</b>	<b>\$ 265,174</b>	<b>\$ 331,896</b>	<b>\$ 375,998</b>

# FINANCIALS AT A GLANCE

## Program Work Overview



## Selected Financial Information





## OUR VISION

We seek a world of hope, tolerance, and social justice, where poverty has been overcome and all people live with dignity and security.

## OUR MISSION

CARE works around the globe to save lives, defeat poverty, and achieve social justice.

## OUR FOCUS

We put women and girls in the center because we know that we cannot overcome poverty until all people have equal rights and opportunities.

## OUR VALUES

Transformation  
Integrity  
Diversity  
Excellence  
Equality











# 75 YEARS OF care<sup>®</sup>

This year, join us as we face global challenges together, standing alongside our communities and showing the world that Americans CARE.

## DONATE

Your gift today can help change the world of tomorrow.

Visit: [care.org](http://care.org)  
Email: [info@care.org](mailto:info@care.org)  
Call: 1-800-521-CARE (2273)  
Mail: CARE Gift Center  
P.O. Box 1870  
Merrifield, VA  
22116

### Future Gifts

Help CARE fight poverty through a bequest. Contact Planned Giving at **1-800-752-6004** for information about including CARE in your estate planning.

## ACTIVATE

Join the conversation.  
Mobilize your networks to show that **Americans CARE.**

 [@careorg](https://www.instagram.com/careorg)

 [@care](https://twitter.com/care)

 [carefans](https://www.facebook.com/carefans)

 [CARE](https://www.linkedin.com/company/CARE)

## ADVOCATE

Speak up! Join CARE Action and raise your voice in the fight against extreme poverty. Call, meet, inform your elected leaders. [careaction.org](http://careaction.org)

 care<sup>®</sup> ACTION

**JOIN US!** [care.org/careers](http://care.org/careers) [care.org/volunteerinatl](http://care.org/volunteerinatl)



## HEADQUARTERS & SOUTHEAST FIELD OFFICE

### CARE USA

151 Ellis Street NE  
Atlanta, GA 30303  
T: 404-681-2552

### CONSTITUENT SERVICES

1-800-422-7385  
info@care.org

### FIELD OFFICES

#### Boston

P.O. Box 390292  
Cambridge, MA 02139

#### Chicago

P.O. Box 57569  
Chicago, IL 60657

#### Los Angeles

3108 Glendale Boulevard, #534  
Los Angeles, CA 90039

#### New York

115 Broadway, 5th Floor  
New York, NY 10006

#### San Francisco

465 California Street, Suite 475  
San Francisco, CA 94104

#### Washington, D.C.

1100 17th Street NW, Suite 900  
Washington, D.C. 20036

**Please send donations to  
CARE's gift processing center  
rather than field offices:**

CARE Gift Center  
P.O. Box 1870  
Merrifield, VA 22116



PHOTO CREDITS — Cover: Daniel Romana/CARE; Inside Front Cover: Karin Scherbrucker/CARE; Page 6: Ollivier Girard/CARE; Page 7: Shantelle Spencer/CARE; Page 8: CARE; Page 9: Bithun Sarkar/CARE; Page 12: Lucy Beck/CARE; Page 13: Laura Noel/CARE; Page 15: Fatmata Jalloh/CARE; Page 16: Bithun Sarkar/CARE; Page 17: CARE Burundi; Page 18: GMB Films/CARE; Page 21: Laura Noel/CARE; Page 22: Jake Lyell/CARE; Page 24: Josh Estey/CARE; Page 27: Josh Estey/CARE; Page 28: Jennifer Bose/CARE; Page 31: Josh Estey/CARE; Pages 32-33: Josh Estey/CARE; Pages 36-37: Jorja Currington/CARE; Pages 38-39: Jacob Dall/CARE.

CARE is an Equal Opportunity Employer and Affirmative Action Employer (AA/M/F/D/V) dedicated to workplace diversity. CARE® and CARE Package® are registered marks of CARE. Copyright ©2021 by Cooperative for Assistance and Relief Everywhere, Inc. (CARE). All rights reserved. Unless otherwise indicated, all photos ©CARE.